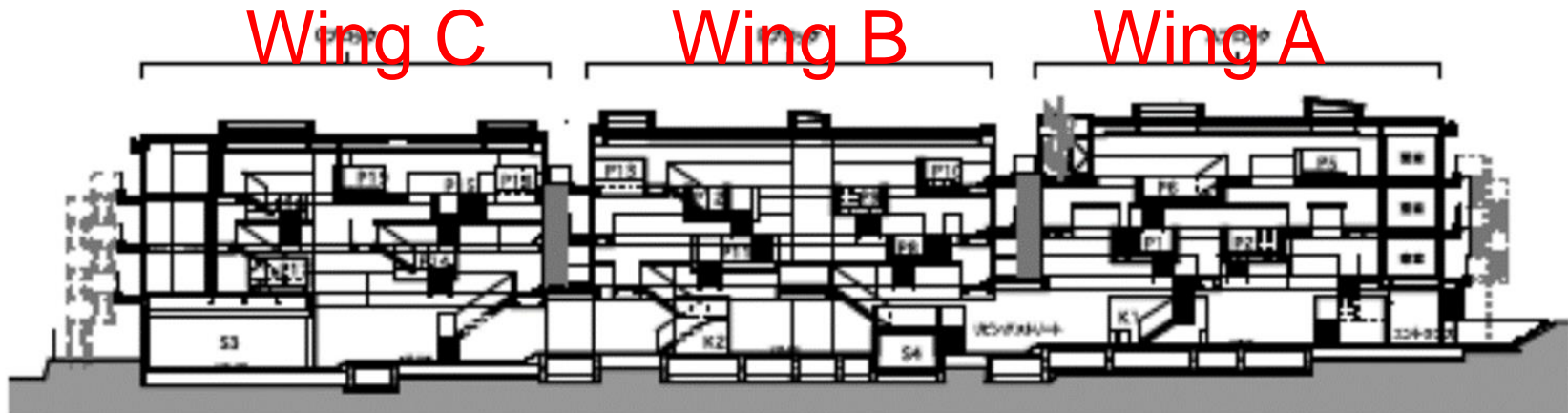


# KU International Dormitory “Kuritaya Akademeia”



# Outline of Kuritaya Akademia

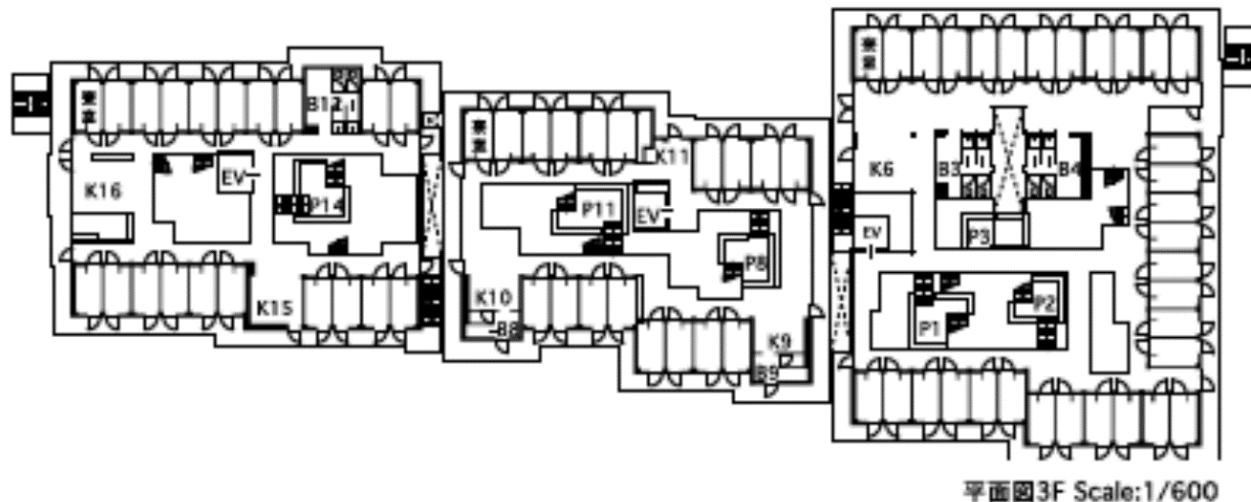
- International student residence with capacity of 200 students
- Three wings (wings A, B and C), wing C is the female-only wing
- Opened in July 2019  
152 Residents as of Nov 2022



# Concept of Kuritaya Akademia

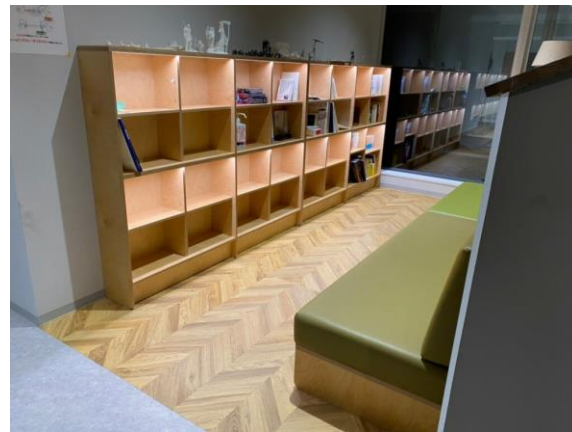
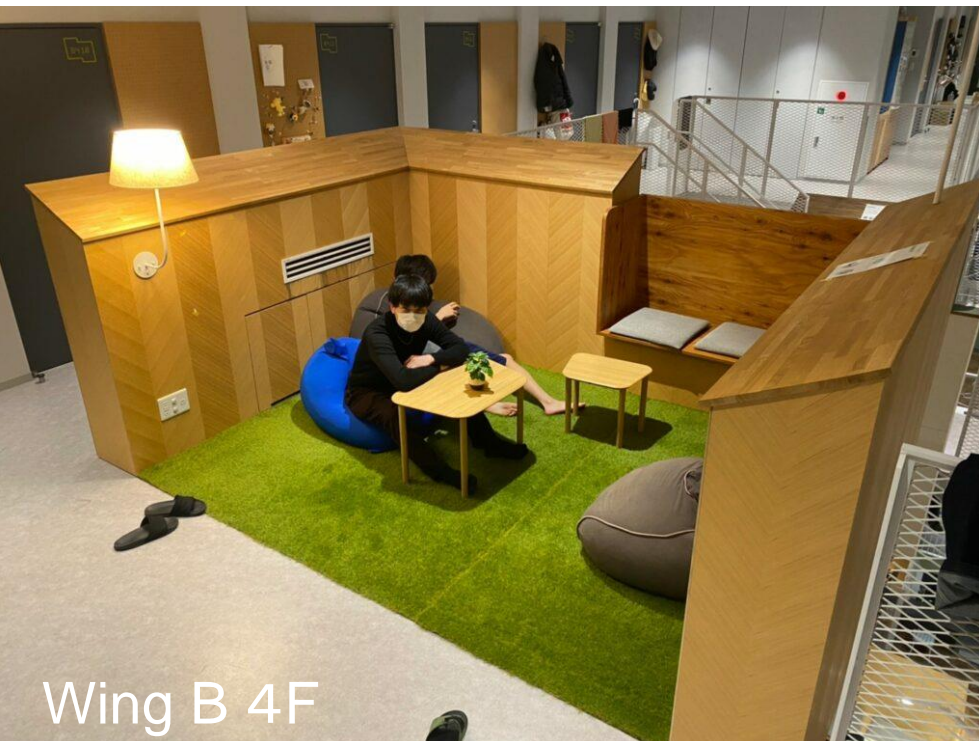
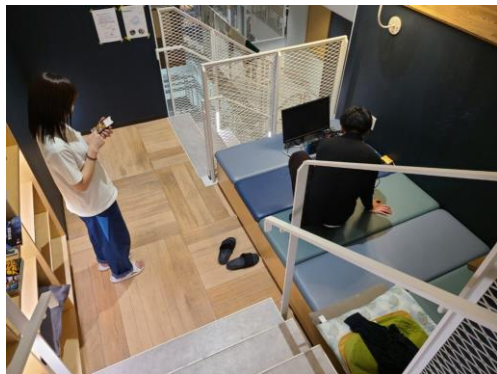
“International student residence  
like a town”

-Almost all spaces are shared  
except individual bedrooms





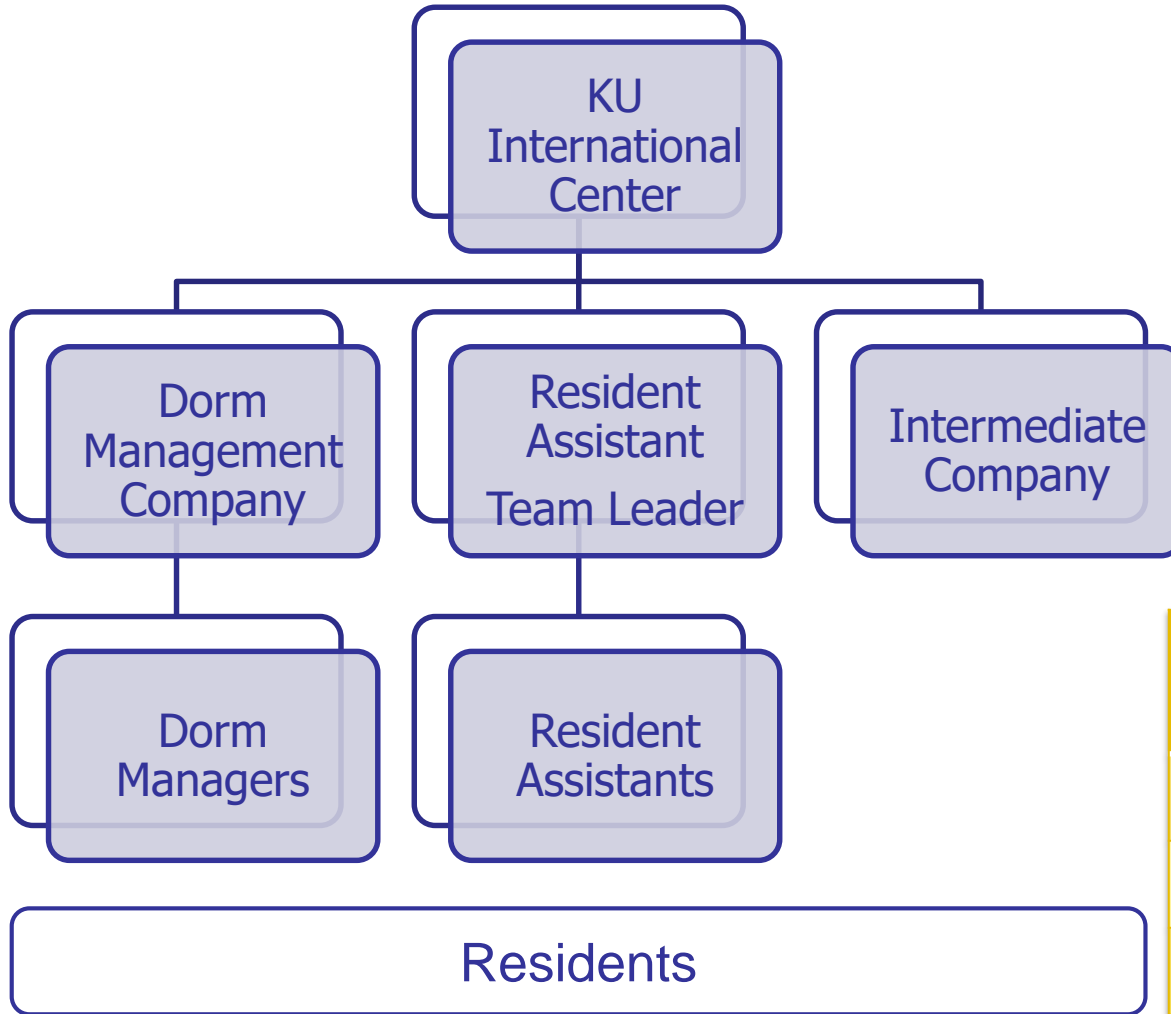
# Common Spaces "Pot"



Wing A 4F

Wing B 4F

# Dorm Organization



Dorm Manager Office



Type	Number of residents
Resident Assistants	12
Residents	39
Exchange Students etc.	101

\*As of Nov 2022

# Kuritaya Akademeia Program

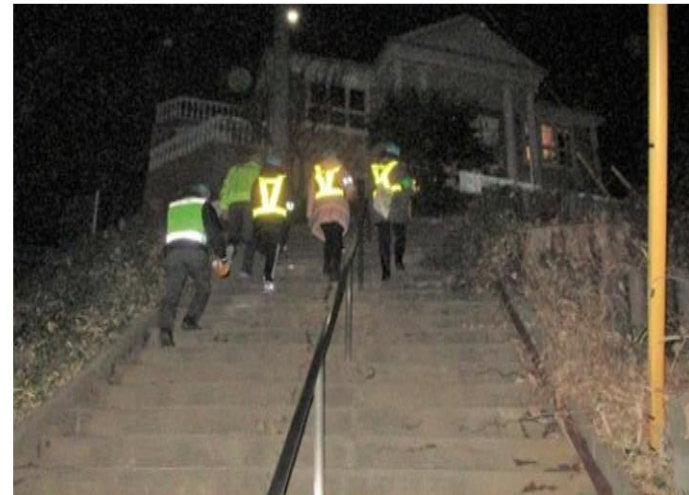
『How can we create a community of “no one left behind & rich in diversity” here and now?』

- SDGs Program
- Conducted around once a month
- Run by an external organization





# Community Activities



# Respecting Dorm Policies

Beyond different background

## ONE MAJOR ISSUE

**Respecting dorm policies**



**Compliance**  
**Be respectful of others**

- Smoking: Prohibited in the dorm (including in external common spaces such as the terraces)
  - + Flicked into neighbor`s yard
  - + Potential fire hazard
- Noise: Right to reasonable peace + quiet
  - + Gatherings after 12 am
  - + Preventing sleep
- Overnight stay: Risk management
  - + Form not submitted prior
  - + Absence from classes



- Resident Assistants (RAs):
  - + Misunderstanding of RA job
  - + Non-influential Leadership
- Personal belongings: Place in order
  - + Neglect
  - + Laundry (Left out in shared spaces)





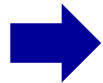
# Handling COVID-19 situation

## KU Rules for COVID-19

1. Report immediately if you have COVID/close contact
2. Rules for EATING
  - Disinfect before eating
  - Eat alone
  - Eat silently
  - When finished eating, leave immediately
3. No drinking parties/gatherings  
No Karaoke in a group  
No long distance drives in a group
4. Stop AEROSOL transmission
  - Always ventilate
  - Keep distance
  - Musk must be unwoven

Our dorm has.....

- Many shared spaces to communicate with others
- Tiny student rooms to promote use of shared spaces
- Open kitchen area to eat together (original plan)



Ask for the cooperation of all residents to strictly follow the KU Rules to prevent the spread of the disease within the dorm so as to protect the safety and well-being of all our residents.

# Conclusion

- Numerous rules to follow



- Frequent rule breaches but not realistic to punish every infringement (strip of credits, fines...)



- Educate residents through programs and RA training

**RESPECT RULES  
AND EMBRACE  
DIFFERENCES**

Thank you for your attention.

11