



UNITED NATIONS  
UNIVERSITY



**UNU-IAS**



United Nations University SDG–Universities Platform

Recommendations for Transformational Changes  
in Universities for Building a Better  
Sustainable Society



United Nations University  
Institute for the Advanced Study of Sustainability (UNU-IAS)  
UNU SDG–Universities Platform (SDG-UP)



# Message from the Chairperson

With growing interest in the SDGs and ESG across the globe, universities have an important role to play by implementing research, education, and campus management that promotes a sustainable society. As higher education can have a substantive impact on local communities and society, there is a high expectation for Japanese universities to contribute towards changing mindsets and action of individuals through research and educational activities, as well as through collaboration with diverse stakeholders.

UNU-IAS has established the UNU SDG–Universities Platform (SDG–UP) for Japanese universities to share their SDGs-related initiatives, promote collaborative activities, and strengthen partnerships and outreach for various stakeholders. Between October 2020 and March 2021, a total of 28 universities from all over Japan participated in a series of workshops discussing and redefining the roles of universities in the context of the 2030 Agenda for Sustainable Development.

This report lays out recommendations in four areas: (i) SDGs curriculum, (ii) university management & green campus, (iii) university finance, and (iv) evaluation & accountability. It also presents the unique cases of participating universities.

I hope that these recommendations can serve as basis to advance transformational change by students, faculty members, and administrative staff of universities, and to trigger a visible impact to build a more sustainable, resilient, and inclusive society.



Dr. Shinobu Yume Yamaguchi  
Director, UNU-IAS  
Chairperson, SDG-UP

# About Us

## United Nations University (UNU)

UNU is a global think tank and postgraduate teaching organisation headquartered in Japan. Its mission is to contribute, through collaborative research and education, to efforts to resolve the pressing global problems of human survival, development and welfare that are the concern of the United Nations, its Peoples and Member States.

In carrying out this mission, UNU works with leading universities and research institutes in UN Member States, functioning as a bridge between the international academic community and the United Nations system.

Through postgraduate teaching activities, UNU contributes to capacity building, particularly in developing countries.

<https://jp.unu.edu/about/unu>

## United Nations University Institute for the Advanced Study of Sustainability (UNU-IAS)

UNU-IAS is a research and teaching institute dedicated to realising a sustainable future for people and our planet. Based in Tokyo, Japan, UNU-IAS serves the international community by producing evidence-based knowledge and solutions to inform policymaking and address priority issues for the UN system.

Through policy-oriented research and capacity development the institute drives progress in four thematic areas: governance for sustainable development, biodiversity & society, water & resource management, and innovation & education. UNU-IAS postgraduate education advances the broader transformation towards sustainability in society — producing the policymakers and researchers of tomorrow, who will be at the forefront of global efforts for sustainability.



# UNU SDG–Universities Platform

## Background

Building a sustainable society through promoting efforts to achieve the SDGs requires all people, countries, organisations, and companies to contribute through transforming their actions and approaches. In particular, with increasing interest in the SDGs among younger generations, universities have a key role to play in educating them to become change agents to promote the transformation towards a sustainable society. A recent survey indicates that awareness of the SDGs among youth in Japan has risen, with every two students recognising different SDGs.

## Objectives

UNU-IAS established SDG–UP as a platform for effective collaboration among universities. It aims to (i) strengthen the efforts of universities on the SDGs, (ii) foster responsible global citizens who can play an active role in the local and international community, and (iii) enhance the visibility of higher education through unique activities promoting a sustainable society.

The objective of SDG–UP is to contribute to sustainable development in Japan and the world by strengthening links between the SDGs-related activities of Japanese universities, as well as other stakeholders including relevant Japanese ministries, local governments, NGOs, and accreditation institutions, and increasing their presence in the international community. SDG–UP drives the collaboration among universities that are proactive in promoting the SDGs, shares activities, and develops personnel who can actively participate in the international community and engage with relevant stakeholders within Japan and beyond.



## Overview

**Name:** UNU SDG–Universities Platform (SDG–UP)

**Date established:** October 2020

**Secretariat:** UNU-IAS

**Chairperson:** Dr. Shinobu Yume Yamaguchi (Director, UNU-IAS)

**Participants:** Management representatives and other decision-making faculty and administrative members of the universities.

### Participating Universities (28 as of March 2021):

Chiba University of Commerce

Ehime University

Hiroshima University

Hokkaido University

International Christian University

International University of Japan

Kanagawa University

Kanazawa University

Keio University

Kwansei Gakuin University

Kyushu Sangyo University

Kyushu University

Nara University of Education

Notre Dame Seishin University

Osaka Medical and Pharmaceutical University

Osaka University

Ryukoku University

Soka University

Sophia University

Tokai University

Tokyo City University

Tokyo Institute of Technology

Tokyo University of Foreign Studies

Tokyo University of Science

Toyo University

The University of Kitakyushu

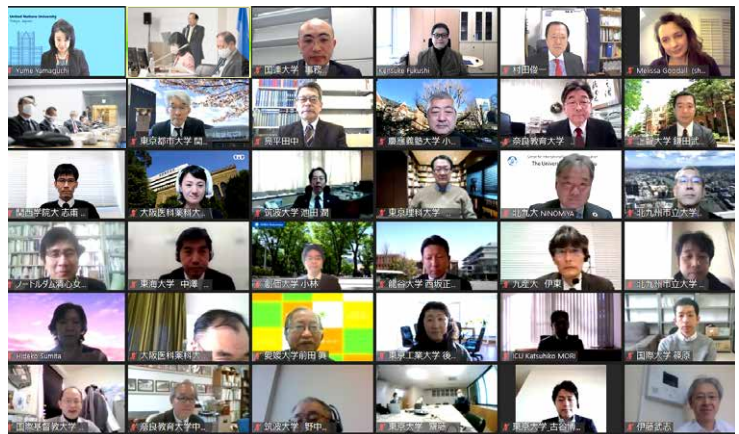
The University of Tokyo

University of Tsukuba

## Workshops

One of the unique features of SDG-UP is its series of monthly workshops. These regularly share information about the ongoing initiatives of universities on sustainability, and further enhance collaboration among the participating institutions. The platform engages universities with different locations, sizes, public or private status, and areas of expertise, and thus, these workshops are a particularly valuable tool to promote mutual learning and synergies. During the first year of the platform, special sessions were organised featuring the Data Analysis Director of Times Higher Education, as well as Deputy Director of the Yale Sustainability Initiative. These workshops discussed the role and function of external evaluation as well as each university's contribution to communities and society at both the local and global levels.

A summary session held in March 2021 identified four important thematic areas — SDGs curriculum, university management including green campuses, university finance, and evaluation and accountability. The recommendations from the panel are presented in the next section.



# 1. Management

## Recommendations

- Universities should define clear roles for promoting sustainability efforts among their students, faculty, and staff.
- In order to contribute to building a more sustainable society, universities should take action to promote sustainability on their campuses (e.g. through decarbonisation, and promoting human rights and diversity).

## Action Plan

- Clarify and disclose the system and roles within each university for promoting sustainability-related activities.
- Study and share best practices of universities in Japan and overseas through SDG-UP, and utilise them to enhance their efforts toward building a better sustainable society.

**In order to promote sustainability efforts in any organisation, leadership by senior management and role-sharing are essential. In universities in particular, due to their nature, each effort will only become durable if faculty, students, and staff are all actively involved. In addition, it is necessary for universities to**

**build sustainable campuses. Promoting environmental considerations, such as decarbonisation, promotion of human rights, and diversity, would not only change the attitudes of faculty and staff, but also have a positive impact on university management.**

## Case A: Achieved RE 100 University — Chiba University of Commerce

Under the leadership of the President, Dr. Sachihiko Harashina, the Chiba University of Commerce declared in 2017 that it would aim to use only renewable energy, thus taking the initiative in building a sustainable society.

By increasing the number of panels on its mega-solar farm and student-centered energy-saving activities, CUC became the first RE 100 university in Japan in 2019.



## 2. Curriculum

### Recommendations

- Universities have a responsibility to provide students with education on sustainability and to produce human resources for building a better, more sustainable society.
- This requires the development of sustainability education programmes that are accessible to all students and that are not focused on a specific area.

### Plan for Realising the Recommendations

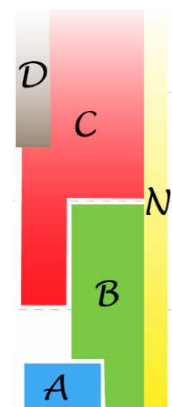
- Develop sustainability education programmes with both UNU-IAS and participating universities, and provide them to other universities through SDG-UP.

Universities play a vital role in developing future talent for society. In order to build a better, more sustainable society, younger generations will need to further increase their interest in sustainability and drive the transformation of behaviour in the future. In other words, developing and delivering

appropriate curriculums on sustainability to students is an important responsibility of universities. These sustainability programmes should not be focused on specific areas and should be accessible to all students.

### Case B: A Curriculum for All Academic Subjects and Students - Tokyo University of Science

In April 2021, Tokyo University of Science established the Academy of Compulsory Education and Research, recognising that the existence of resilient people is essential to realising a resilient society. In order to develop human resources with expertise and knowledge who can critically grasp the ideal image of the future, the university plans to introduce a curriculum for all academic SDGs starting in the 2022–2023 financial year.



### 3. Finance

#### Recommendations

- Universities should use sustainable finance as a new means of financing.
- Universities should also engage in responsible investment to contribute towards transforming the behaviour of investors

#### Plan for Realising the Recommendations

- Set up a study group among the participating universities to promote the diversification of university finance, including university bonds.
- Consider becoming signatories to the Principles for Responsible Investment (PRI), and manage university assets with awareness of sustainability.

As the environment surrounding universities changes, it is necessary to reconsider university financing. Financing methods have recently become more diverse, and ESG investment has grown to several trillions of dollars worldwide. There are many overseas universities issuing sustainable bonds, and it is necessary for Japanese universities to secure a variety of financing instruments, including sustainable financing. Discussions on the country's approach as

a whole are also necessary, including on regulation reforms.

On the other hand, universities can contribute to the transformation of society as investors by promoting sustainable activities in their investment targets.

Universities are expected to consider becoming signatories to the PRI and take other initiatives that benefit society as a whole.

#### Case C: Issuance of the World's First University Social Bond\* Worth ¥20B (\$189 M) - The University of Tokyo

The University of Tokyo aspires to contribute to creating a better future by becoming a platform of societal change. The issuance of the University of Tokyo FSI Bonds in 2020, the world's first university social bond and the first bond in the history of Japanese national universities, is a new form of investment for the future. Universities being a destination for long-term investments can create a new mechanism where funds flow for the betterment of the future society.

\* according to Bloomberg and ICMA database



**SDG Bonds**

UTokyo  
**FSI**  
The University of Tokyo  
Future Society Initiative





## 4. Accountability and Utilisation of External Evaluations

### Recommendations

- Universities are also "public goods of society," and they should recognise that their activities require accountability.
- Universities should utilise external assessments as a means of visualising their educational and research activities based on global standards, and as a means for building their self-assessment systems to improve management to drive the transformation of their behaviour.

### Plan for Realising the Recommendations

- Actively disclose sustainable activities within Japan and overseas.
- Continue to undertake dialogue with external evaluation institutes including the Times Higher Education (THE).

Today, accountability is required of every country, nation, business, and organisation, and universities are no exception. In order for universities to attract students from around the world and promote international exchange, it will be necessary to further improve their communication capabilities.

Achieving high rankings by external evaluation institutions can be a strong motivation for universities. In addition, obtaining external evaluations enables us to visualise our management and educational and research activities and to utilise them to improve university management.

### Case D: "Contributing towards the Resolution of Global Issues" by Developing Assessment System by the "Sustainable Campus Initiatives" - Hokkaido University

Hokkaido University has developed the first comprehensive Assessment System for Sustainable Campus (ASSC) in Asian universities and implemented it as a campus management improvement tool.

This ASSC has also led the University's ranking on the Times Higher Education (THE) Impact Rankings and contributed to realising its "Sustainable Campus".

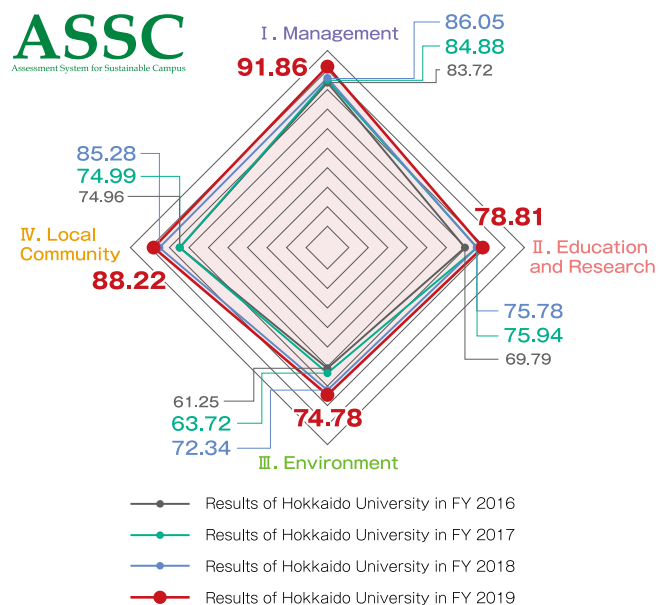


Figure 1. Score rates of Hokkaido University in the four categories

# Case Studies of Participating Universities

- 1 . Chiba University of Commerce
- 2 . Ehime University
- 3 . Hiroshima University
- 4 . Hokkaido University
- 5 . International Christian University
- 6 . International University of Japan
- 7 . Kanagawa University
- 8 . Kanazawa University
- 9 . Keio University
- 10 . Kwansei Gakuin University
- 11 . Kyushu Sangyo University
- 12 . Kyushu University
- 13 . Nara University of Education
- 14 . Notre Dame Seishin University
- 15 . Osaka Medical and Pharmaceutical University
- 16 . Osaka University
- 17 . Ryukoku University
- 18 . Soka University
- 19 . Sophia University
- 20 . Tokai University
- 21 . Tokyo City University
- 22 . Tokyo Institute of Technology
- 23 . Tokyo University of Foreign Studies
- 24 . Tokyo University of Science
- 25 . Toyo University
- 26 . The University of Kitakyushu
- 27 . The University of Tokyo
- 28 . University of Tsukuba

The views expressed in this publication are those of the authors and do not necessarily reflect the views of the United Nations University.

Established	1928
Number of Students	6,531 (May 1, 2021)
Student Ratio Males to Females	-
Percentage of International Students	-
Number of Faculty	175 (May 1, 2021)
Faculty Ratio Males to Females	-
Number of Foreign Faculty	-
URL	<a href="https://www.cuc.ac.jp/eng/">https://www.cuc.ac.jp/eng/</a>
Contact	President office / p-office@cuc.ac.jp

## Sustainability Report

### 100% renewable energy university

#### Working towards Sustainability

CUC is tackling energy transition as one way to promote decarbonization. In 2019, by promoting both energy generation and energy conservation, CUC succeeded in generating renewable energy equal to the electricity it consumes on campus for the first time as a university in Japan. In the fall of 2019, it succeeded in procuring all its electricity needs from renewable sources and registered on the United Nations Race to Zero, another first for a university in Japan. CUC's next aim is to generate

renewable energy equal to all its energy needs, including gas. The ultimate aim of an RE100 university is to create a decentralized, regional energy supply-based society. To spread this movement to other universities also supporting decarbonization, CUC launched a Renewable Energy University League in June 2021.



Established	1949
Number of Students	9,172 (May 1, 2021)
Student Ratio Males to Females	60:40
Percentage of International Students	2.0%
Number of Faculty	791 (May 1, 2021)
Faculty Ratio Males to Females	80:20
Number of Foreign Faculty	25
URL	<a href="https://www.ehime-u.ac.jp/">https://www.ehime-u.ac.jp/</a>
Contact	SDGs Promotion Office / <a href="mailto:sdgs@stu.ehime-u.ac.jp">sdgs@stu.ehime-u.ac.jp</a>
Sustainability Report	<a href="https://is.gd/hxul5L">https://is.gd/hxul5L</a>

**Biological controls of pathogens and pests to reduce dependence on chemical use: towards sustainable infectious disease control and agriculture**

The Southeast Asia Environmental Health Research Unit proposes a new approach to appropriately use pharmaceuticals, pesticides, and other chemicals to control infectious diseases and increase agricultural productivity while minimizing the burden of chemical pollution on the environment and ecosystems in developing countries, such as Philippines and Indonesia. The Research Unit is developing and proposing alternative technologies for biological control of

pathogens and pests, such as genome editing of vector mosquito that prevent viral amplification in the body, mosquito habitat distribution prediction model that enables efficient and pinpoint spraying of insecticides with minimal amount, and natural enemy organisms (i.e., biological pesticide) and attractant pheromone traps that can control agricultural pests with less agricultural chemicals, to achieve symbiosis between human and nature and their sustainable systems. By proposing not

only conventional monitoring and regulation of chemical, but also the alternative biological control technologies, implementation to medical and agricultural fields is expected to be promoted in a way that is more acceptable to stakeholders.





Established	1949
Number of Students	15,040 (May 1, 2021)
Student Ratio Males to Females	60:40
Percentage of International Students	18.2%
Number of Faculty	1,872 (May 1, 2021)
Faculty Ratio Males to Females	80:20
Number of Foreign Faculty	116
URL	<a href="https://www.hiroshima-u.ac.jp/about">https://www.hiroshima-u.ac.jp/about</a> NERPS (Japanese) <a href="https://nerps.hiroshima-u.ac.jp/">https://nerps.hiroshima-u.ac.jp/</a> NERPS (English) <a href="https://nerps.org/">https://nerps.org/</a> *NERPS: Network for Education and Research on Peace and Sustainability (NERPS) at Hiroshima University.
Contact	Dept. of Research and Academia-Government-Community Collaboration URA Div. / <a href="mailto:gakujutu-ura-gl@office.hiroshima-u.ac.jp">gakujutu-ura-gl@office.hiroshima-u.ac.jp</a>
Sustainability Report	(Japanese) <a href="https://nerps.hiroshima-u.ac.jp/files/sdgs-report/NERPS_report2018_2019.pdf">https://nerps.hiroshima-u.ac.jp/files/sdgs-report/NERPS_report2018_2019.pdf</a> (English) <a href="https://nerps.org/wp-content/uploads/2020/05/NERPS-Activity-Report-2018-2019_0508.pdf">https://nerps.org/wp-content/uploads/2020/05/NERPS-Activity-Report-2018-2019_0508.pdf</a>

## Creation of an integrated knowledge center implementing “Science for Sustainable Development” with a view to contributing to the attainment of the SDGs

Since 2020, Hiroshima University’s Network for Education and Research on Peace and Sustainability (NERPS) has implemented six trans-disciplinary research projects on “Peace and Sustainability” in collaboration with four cross-appointed professors based at University of Denver, Columbia University, Stockholm International Peace Research Institute, and University of Nottingham Ningbo China, respectively. Under the projects, the linkages and interactions between peace and sustainability have been discussed through a series of webinars, and a network with researchers and other stakeholders has expanded. NERPS aims to become a research center focused on peace backed by internationally viable research capabilities, leading to the establishment of a research

### NERPS trans-disciplinary research projects collaborated with top researchers and stakeholders

<b>Project #1</b> <b>Ayyoob Sharifi</b> HIROSHIMA UNIVERSITY Systematic Review of Research on the Peace-sustainability Nexus	<b>Project #2</b> <b>Cullen S. Hendrix</b> UNIVERSITY OF DENVER Promoting Peace through Shared Governance of the Seas: Can Regional Fisheries Management Organizations Manage Fisheries Conflict?
<b>Project #3</b> <b>Florian Krampe</b> sipri Peace and Sustainability in the Anthropocene – Meeting the evolving peace requirements of post-conflict societies	<b>Project #4</b> <b>Joshua Fisher</b> COLUMBIA UNIVERSITY Protected Area Management & Natural Resource Governance: Exploring Pathways for Environmental Sustainability & Peacebuilding
<b>Project #5</b> <b>Ali Cheshmehzangi</b> University of Nottingham Ningbo China ICT-Method and Digital-Technologies for Resilience of Cities (IDRC): Sustainability Pathways to meet Positive Peace	<b>Project #6</b> <b>Dahlia Simangan</b> HIROSHIMA UNIVERSITY Sustainable Peace and Peaceful Sustainability in Conflicted -Affected Societies

### Creation of “Science for Sustainable Development”

and education center implementing “Science for Sustainable Development” - a concept of peace science highlighted in Hiroshima University’s long-term vision called the SPLENDOR PLAN 2017.

Established	1876
Number of Students	18,106
Student Ratio Males to Females	70:30
Percentage of International Students	11.6%
Number of Faculty	1,988 (May 1, 2020)
Faculty Ratio Males to Females	86:14
Number of Foreign Faculty	193
URL	(Japanese) <a href="https://www.hokudai.ac.jp/">https://www.hokudai.ac.jp/</a> (English) <a href="https://www.global.hokudai.ac.jp/">https://www.global.hokudai.ac.jp/</a>
Contact	International Affairs Department / <a href="mailto:global@oia.hokudai.ac.jp">global@oia.hokudai.ac.jp</a>
Sustainability Report	(Japanese) <a href="https://www.osc.hokudai.ac.jp/action/sustainability-report">https://www.osc.hokudai.ac.jp/action/sustainability-report</a> (English) <a href="https://www.osc.hokudai.ac.jp/en/action/environmental-report">https://www.osc.hokudai.ac.jp/en/action/environmental-report</a>

“Sustainable Campus” means a “university that contributes to building of a sustainable society through its education, research, social collaboration and campus development.”

Based on the Hokkaido University Environmental Policy formulated in 2005 and the Sapporo Sustainability Declaration adopted on the G8 University Summit in 2008, Hokkaido University planned and has implemented specific measures to realize its sustainable campus.

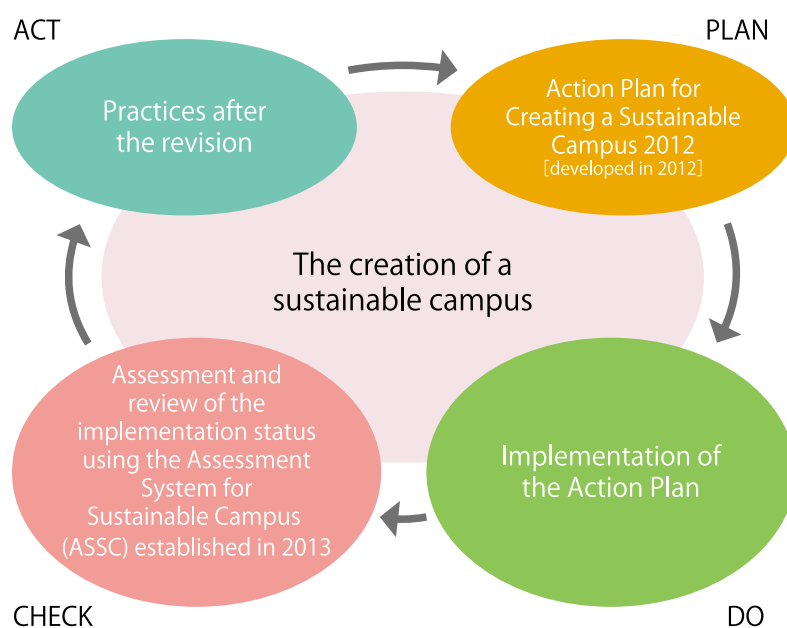
In 2012, the University established an action plan to build a sustainable campus to maintain a PDCA cycle for the implementation.

As the evaluation method of this PDCA cycle, the University developed the “Assessment System for Sustainable Campus (ASSC)”. The ASSC comprises four categories: administration, education and research, environment, and regional society, with total 170 evaluation criteria for those categories.

In 2018, the department in charge was reorganized as the Sustainable Campus Management Office in order to manage more flexible and agile collaboration

between faculty and administrative staff.

In recognition of the ASSC and the system for sustainable campus development, Hokkaido University became the only finalist from Japan as a “Sustainability Institute of the Year” of the International Green Gown Awards 2019, which title is given to higher education institutions for their outstanding sustainability initiatives.



Established	1953
Number of Students	3,139 (May 1, 2021)
Student Ratio Males to Females	-
Percentage of International Students	11.0%
Number of Faculty	146 (May 1, 2021)
Faculty Ratio Males to Females	-
Number of Foreign Faculty	52
URL	<a href="https://www.icu.ac.jp/">https://www.icu.ac.jp/</a>
Contact	<a href="https://www.icu.ac.jp/inquiry/">https://www.icu.ac.jp/inquiry/</a>
Sustainability Report	<a href="https://www.icu.ac.jp/about/info/">https://www.icu.ac.jp/about/info/</a>

ICU launched in 2015 a solar power generation project in integrating the three dimensions of sustainable development by reducing CO2 emissions (environmental), generating revenue for education and research (social), and utilizing idle assets (economic). Also introduced in 2020 service-learning for SDGs in integrating activities on research, education, outreach, and impact management.



Established	1982
Number of Students	309 (May 1, 2020)
Student Ratio Males to Females	60:40
Percentage of International Students	92.6%
Number of Faculty	53 (May 1, 2020)
Faculty Ratio Males to Females	83:17
Number of Foreign Faculty	24
URL	<a href="https://www.iuj.ac.jp/">https://www.iuj.ac.jp/</a>
Contact	Office of Top Global University Project / <a href="mailto:sgu@iuj.ac.jp">sgu@iuj.ac.jp</a>

Sustainability Report

**Title: International University of Japan, a "University where the world cooperates"**

IUJ is quite unique among many universities in Japan; while it is located in the midst of the charming Japanese countryside, it is a highly internationalized university where all instructions are conducted in English, and more than 90% of its students are from more than 60 countries around the globe. Living in the school's on-campus dormitories, students spend their time together for their academic studies and daily-life activities. These everyday interactions give the students the opportunity to learn from each other and share their respective cultures and customs, and creating an environment where cross-cultural interaction is the norm. This highly international environment makes IUJ an ideal forum for discussing global issues and working toward the realization of a sustainable future that the SDGs envisage. Some of the specific examples of IUJ's effort include the establishment of the new one-year "Digital Transformation (DX) Program" and the new "International Social Entrepreneurship Program (ISEP)" in autumn 2021.





Established	1928
Number of Students	17,333 (May 1, 2021)
Student Ratio Males to Females	70:30
Percentage of International Students	1.9%
Number of Faculty	499 (April 1, 2021)
Faculty Ratio Males to Females	81:19
Number of Foreign Faculty	44
URL	<a href="https://www.kanagawa-u.ac.jp/">https://www.kanagawa-u.ac.jp/</a>
Contact	Office of the President / <a href="mailto:gakucho-secretary@kanagawa-u.ac.jp">gakucho-secretary@kanagawa-u.ac.jp</a>
Sustainability Report	<a href="https://www.kanagawa-u.ac.jp/disclosure/">https://www.kanagawa-u.ac.jp/disclosure/</a>

## The "SDGs PBL Program" held at the Kanagawa University international dormitory "Kuritaya Akademeia".

Students from various countries live together in the international dormitory "Kuritaya Akademeia", which was established with the purpose of creating a new community by respecting diversity through various exchanges and experiences of students from diverse backgrounds.

The "SDGs PBL Program" has been implemented as an initiative that suits this purpose. The basic program aims to improve English proficiency and understanding of

diversity (of the self, others, and the community), and the practical program aims to develop human resources who can promote the SDGs. Study meetings and group work tasks were conducted as part of the program. At the final presentation, the goals to be achieved and the results of the activities of each team were announced, on the topic of "Sustainable Efforts to Change the World by Starting with the Familiar".



Exterior of the international dormitory "Kuritaya Akademeia"



# Kanazawa University

Established	1949
Number of Students	10,111 (May 1, 2021)
Student Ratio Males to Females	63:37
Percentage of International Students	5.2%
Number of Faculty	1,033 (May 1, 2021)
Faculty Ratio Males to Females	82:18
Number of Foreign Faculty	39
URL	<a href="https://www.kanazawa-u.ac.jp/">https://www.kanazawa-u.ac.jp/</a>
Contact	Research and Social Co-creation Promotion Department / chiikikyosousuishin-kafuku@adm.kanazawa-u.ac.jp
Sustainability Report	<a href="http://www.adm.kanazawa-u.ac.jp/ad_sisetu/kankyoutorikumi.html">http://www.adm.kanazawa-u.ac.jp/ad_sisetu/kankyoutorikumi.html</a>

## Local Community x SDGs: The Kanazawa University Triangle for SDGs

Kanazawa University fosters human resources who can put the principles of SDGs into practice in society, based on partnerships with diverse institutions, by closely linking three areas ("The Kanazawa University Triangle"): Community-oriented activities ("Local"), international activities ("Global"), and human resource development ("Capacity building").



In cooperation with Suzu City, which has been selected as an SDGs Future City, and other institutions, we are implementing the "Noto Satoyama Satoumi

SDGs Meister Training Program," based on the Globally Important Agricultural Heritage Systems "Noto's Satoyama and Satoumi." This is a program for working people that provides education about SDGs in addition to creating new values for "Satoyama" (mountains close to a rural settlement habitat) and "Satoumi" (sea close to a rural settlement habitat), based on local circumstances. So far, 205 people have been certified as Meisters, and are contributing to regional revitalization through various activities such as tree-planting projects, agriculture, and

product development using local products.

The "Kanazawa University Organization for Global Affairs SDGs Biosphere Reserves, Geoparks Research Center" was established in February 2019 at a traditional house in the Shiramine district as the university's education and research center for



SDGs. In collaboration with local organizations such as the Hakusan Shiramine Nature School and the Mount Hakusan Biosphere Reserve Council, we are using the center as a base to further promote various initiatives such as offering homestays, walks in the Shiramine area, and learning about the history, culture, and nature of Hakusan.

Through these programs, we contribute to the achievement of SDGs by fostering the next generation of leaders who will work to solve local issues.



Established	1858
Number of Students	33,436 (as of May 1, 2020)
Student Ratio Males to Females	64:36
Percentage of International Students	5.7%
Number of Faculty	2,316 (as of May 1, 2020)
Faculty Ratio Males to Females	72:28
Number of Foreign Faculty	206
URL	<a href="https://www.keio.ac.jp/en/">https://www.keio.ac.jp/en/</a>
Contact	Global Engagement Office / <a href="mailto:keio-geo@adst.keio.ac.jp">keio-geo@adst.keio.ac.jp</a>
Sustainability Report	<a href="https://www.global-sdgs.keio.ac.jp/en/sdgs/">https://www.global-sdgs.keio.ac.jp/en/sdgs/</a>

## Aiming to improve the sustainability of global society

Keio University is promoting the Ministry of Education, Culture, Sports, Science and Technology's (MEXT) Top Global University Project (adopted in AY 2014) under the conceptual theme of "Enhancing Sustainability of Global Society Through *Jitsugaku* (Science)." In 2018, we established the Office of Equity, Diversity, and Inclusion with the aim of realizing a cooperative and collaborative

society in which diverse values are recognized and there is equal respect for the dignity of oneself and others, while in September of the following year, we established our "Charter for the Promotion of Equity, Diversity, and Inclusion." In 2020, we launched a website to introduce the various on-campus activities related to the Sustainable Development Goals (SDGs).



<https://www.global-sdgs.keio.ac.jp/en/sdgs/>

Established	1889
Number of Students	24,874 (May 1, 2021)
Student Ratio Males to Females	50:50
Percentage of International Students	3.7%
Number of Faculty	774 (May 1, 2021)
Faculty Ratio Males to Females	80:20
Number of Foreign Faculty	115
URL	<a href="https://www.kwansei.ac.jp/">https://www.kwansei.ac.jp/</a>
Contact	General Planning Department / <a href="mailto:kgu-gap@kwansei.ac.jp">kgu-gap@kwansei.ac.jp</a>
Sustainability Report	<a href="https://kgc2039.jp/sdgs/">https://kgc2039.jp/sdgs/</a>

## Cultivating World Citizens Who Embody Our School Motto of "Mastery for Service" Initiatives for the SDGs That Are Centered Around Student Education

At Kwansei Gakuin University, where it is our mission to cultivate World Citizens who embody "Mastery for Service," we have promoted training programs in cooperation with the United Nations and other international organizations, such as university admission for refugees—the first program of its kind in Japan—and student dispatch based on an agreement with the United Nations Volunteers (UNV). We situated the Sustainable

Development Goals (SDGs) as one of the pillars of our Long-Term Plan, and established the Headquarters for Promoting SDGs in April 2019. We are moving forward with initiatives for the SDGs that are centered around student education, including efforts such as the "My Bottle" project and the BiZCAFE at the Kobe-Sanda Campus, which we accomplished through a joint effort by the university, students, and companies.



Established	1960
Number of Students	10,280 (May 1, 2020)
Student Ratio Males to Females	73:27
Percentage of International Students	3.6%
Number of Faculty	330 (May 1, 2020)
Faculty Ratio Males to Females	82:18
Number of Foreign Faculty	42
URL	<a href="https://www.kyusan-u.ac.jp">https://www.kyusan-u.ac.jp</a>
Contact	General Planning Department / <a href="mailto:kikaku@ml.kyusan-u.ac.jp">kikaku@ml.kyusan-u.ac.jp</a>

## Sustainability Report

### Driving SDGs through KSU Project-based Education

The university is developing human resources who have high level of expertise with a rich sensibility as a university leading in unique fusion education in the Humanities, Science and Art.

The base of the university's education is its founding idea "Unification of Industry and Academia". With this idea, the university actively promoting project-based education.

In the various projects collaborate not only within the campus but also with the companies, governments and region outside, students recognize various problem in society and learn SDGs through considering and seeking the solution to these problems.



Established	1911
Number of Students	18,566 (May 1, 2020)
Student Ratio Males to Females	72:28
Percentage of International Students	12.5%
Number of Faculty	2,378 (May 1, 2020)
Faculty Ratio Males to Females	15:85
Number of Foreign Faculty	1,002
URL	<a href="https://www.kyushu-u.ac.jp/en/">https://www.kyushu-u.ac.jp/en/</a>
Contact	Global Strategies, International Affairs Division <a href="mailto:intlsenryaku@jimu.kyushu-u.ac.jp">intlsenryaku@jimu.kyushu-u.ac.jp</a>
Sustainability Report	<a href="https://www.kyushu-u.ac.jp/f/42345/%E7%92%B0%E5%A2%83%E5%A0%B1%E5%91%8A%E6%9B%B82020.pdf">https://www.kyushu-u.ac.jp/f/42345/%E7%92%B0%E5%A2%83%E5%A0%B1%E5%91%8A%E6%9B%B82020.pdf</a> (Japanese)

### The Inclusive Wealth Report (IWR) was launched by host country of World Environment Day.

The Ministry of Climate Change and the United Nations Environment Programme has released an assessment of the inclusive wealth, ideal measure of sustainable development. This report, titled Inclusive Wealth of Pakistan: The Case for Investing in Natural Capital and Restoration was launched as part of World Environment Day celebrations globally hosted by Pakistan.

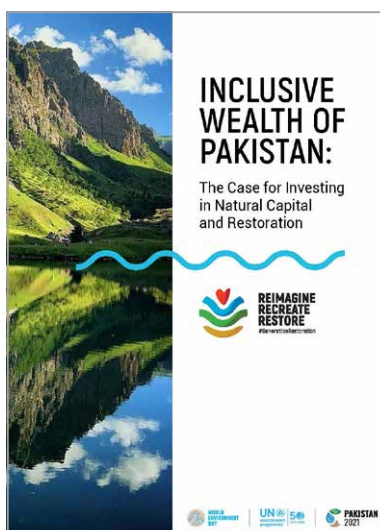
Shunsuke Managi, a Distinguished Professor and Director of Urban Institute at Kyushu University (also coordinating lead author of the IPBES-IPCC report) organized the report and it utilizes the Inclusive Wealth Index (IWI) developed by the Urban Institute of Kyushu University. It assesses the trends of natural, produced and human capital during the period of 1992 to 2019, and estimates the total inclusive wealth during the period taking a geospatial perspective.

Pakistan's inclusive wealth increased at an average of 2.3 per cent annually in absolute terms. Analysis of the individual capital categories shows that human capital and produced

capital grew, while natural capital declined negligibly, around 0.1 per cent. However, the last five years have shown evidence of an environmental turnaround since 2015. This is expected to be boosted by Pakistan's effort on restoration policy and tree plantation schemes as part of the Ten Billion Tree Tsunami Programme.

Inclusive Wealth of Pakistan is a great leap forward towards measuring the contribution of natural resources and systems like expanded forest area and the health and well-being of human societies. The Report could deliver sufficient outcome and contributions to SDGs in

the future. It also makes a powerful case for continued improvements in our understanding of inclusive wealth, and this assessment of inclusive growth for SDGs is suggested to evaluate sustainability both globally and locally. Kyushu University hosts next global report of UN Inclusive Wealth Report and successfully advised to governments for detailed policies.





Established	1888
Number of Students	1,222 (May 1, 2021)
Student Ratio Males to Females	43:57
Percentage of International Students	2.0%
Number of Faculty	93 (May 1, 2021)
Faculty Ratio Males to Females	76:24
Number of Foreign Faculty	2
URL	<a href="https://www.nara-edu.ac.jp/">https://www.nara-edu.ac.jp/</a>
Contact	Educational and Academic Support Section / k-soumu@nara-edu.ac.jp

## Sustainability Report

### ESD teacher program

Nara University of Education trains teachers in Education for Sustainable Development. Our ESD Teacher Program was launched in 2015.

### ESD teacher program overview

First Workshop:

Understanding the meaning of the Sustainable Development Goals (SDGs)

Second Workshop:

The learning theory of Education for Sustainable Development (ESD)

Third Workshop:

Analysis of best practices in ESD course design

Fourth Workshop:

Peer review of ESD lesson plans and preparation of lesson plans and practice reports

Fifth Workshop:

Peer review of ESD study plans and practice reports

We authorized 117 teachers to finish the Program and gave them Certification.



### Developing teaching ability & attitude to conduct Education for Sustainable Development



## Notre Dame Seishin University



Established	1949
Number of Students	2,019 (March 31, 2021)
Student Ratio Males to Females	0:100
Percentage of International Students	0.0%
Number of Faculty	92 (March 31, 2021)
Faculty Ratio Males to Females	51:49
Number of Foreign Faculty	8
URL	<a href="https://www.ndsu.ac.jp/">https://www.ndsu.ac.jp/</a>
Contact	Office of the President / <a href="mailto:prof4@post.ndsu.ac.jp">prof4@post.ndsu.ac.jp</a>

### Sustainability Report

#### Learning about the SDGs through Attempts at Social Change

Notre Dame Seishin University (NDSU) provides all students with opportunities and support to change society towards achieving the SDGs. This has mainly been coordinated through the NDSU Center for Regional Collaboration and SDGs Promotion (NRS) under the support from its UN office and the understanding about the SDGs from Sisters of Notre Dame de Namur (SND), which is the founding body of the university and the UN NGO (<https://sndatun.wordpress.com/>).

We have several groups of students who took action to achieve the SDGs. A group of students submitted recommendations for a prefectural gender equality policy in collaboration with the Okayama Prefectural

Office in 2020. Another group of students cooperated with the revisions for the Okayama Prefecture Anti-nuisance Ordinance (2018-2019). There is also a group of students which cooperated in research and projects with Okayama City for gender equalization. We have also cooperated in projects, in which our students participated, to formulate detailed rules to prevent harassment.

NDSU itself has created and will continue creating gender-equal organizations. It is one of the important achievements of our university that half of the people in the management teams are female and half of the faculty members are women as well.





Established	2021 *Osaka Medical University established in 1927 and Osaka Pharmaceutical University established in 1904 integrated.
Number of Students	3132 (May 1, 2021)
Student Ratio Males to Females	41:59
Percentage of International Students	0.3%
Number of Faculty	582 (May 1, 2021)
Faculty Ratio Males to Females	73:27
Number of Foreign Faculty	5
URL	<a href="https://www.omp.ac.jp/">https://www.omp.ac.jp/</a>
Contact	<a href="mailto:sakae.wasa@omp.ac.jp">sakae.wasa@omp.ac.jp</a>
Sustainability Report	<a href="https://www.omp.ac.jp/about/sustainability.html">https://www.omp.ac.jp/about/sustainability.html</a>

**New integrated intervention for Children with learning difficulty by medical care, practical education, and research [LD:learning difficulty Center / Institute for Developmental Brain Research / Department of pediatrics]**

Since the establishment of LD center in 2001, we have been providing neuropsychological assessment, diagnosis, and integrated interventions to Children with learning and motor difficulty due to neurodevelopmental disorders. The interventions have shown successful improvement in their leaning and fine motor skills by the admission of elementary school. In addition to the direct services to the Children with special needs, we also have promoted more than 50 lectures and workshops annually to their parents, teachers, and care providers for their better understanding of the management. The total number of attendees has been up to 8000 in a year. Following the successful experiences of the LD center,

Institute for Developmental Brain Research was established in 2018 to provide further contribution by adding scientific advancement, such as evidence-based medicine, and teaching. Our approach is very unique in terms of providing one-stop from research to clinical intervention for the children who need special care, and this approach is not found in other medical universities in Japan.

Our acts meet a requirement set by SDGs goal 4.2 “ensure that all girls and boys have access to quality early childhood development, care and pre-primary education so that they are ready for primary education”.



Communication program for kids with Down syndrome



Art program for kids with special needs

Established	1931
Number of Students	25,461 (May 1, 2021)
Student Ratio Males to Females	65:35
Percentage of International Students	9.8%
Number of Faculty	3,360 (May 1, 2021)
Faculty Ratio Males to Females	80:20
Number of Foreign Faculty	305
URL	<a href="https://www.osaka-u.ac.jp/">https://www.osaka-u.ac.jp/</a> <a href="https://sdgs.osaka-u.ac.jp/">https://sdgs.osaka-u.ac.jp/</a>
Contact	General Affairs Division, Department of General Affairs sdgs@ml.office.osaka-u.ac.jp
Sustainability Report	<a href="https://www.osaka-u.ac.jp/ja/guide/information/joho/zaimu/r01">https://www.osaka-u.ac.jp/ja/guide/information/joho/zaimu/r01</a>

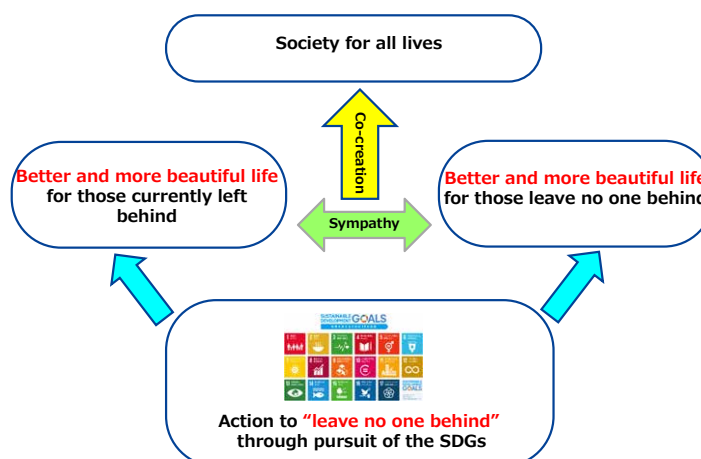
Through the global platform of the SDGs, Osaka University will expand its co-creation network to include diverse contributors including not only industries and local governments, but also economic organizations, international organizations, and citizens. In this co-creation network, we will promote the advancement of science and technology and academia, develop talented individuals who will lead the future, strive for social stability and welfare, world peace, and harmony between humans and the natural environment. In doing so, we will actively contribute to the creation of a society that will “leave no one behind.”

The 2025 World Exposition in Osaka, Kansai, Japan which will be held under the theme of “Designing Future Society for Our Lives,” also calls for achieving the SDGs. It goes without saying that as we advance the SDGs and take action to “leave no one behind,” people who are currently facing a variety of difficulties and being “left behind” will receive assistance and gain a “better and more beautiful life.” But there is more to it than that. Those who endeavor to leave no one behind will also gain a “better and more beautiful life” by engaging, sympathizing, and overcoming challenges together with those being left behind. Based on this philosophy, we established the Osaka University

Expo 2025 Committee in order to use Expo 2025 as an opportunity to contribute to achieving the SDGs.

Our university has been participating in the Kansai SDGs Platform since its establishment. The Kansai SDGs Platform is comprised of over 1200 members such as private companies, civil society organizations, universities, and local governments in the Kansai region. We recently established the University Subcommittee within this platform. We have already launched a project to promote achieving the SDGs in cooperation with corporations, NPOs, and local governments. Universities in the Kansai region play a central role in these efforts.

### Our Philosophy: SDGs and a Society for All Lives



Established	1639
Number of Students	20,489 (May 1, 2021)
Student Ratio Males to Females	62:38
Percentage of International Students	2.1%
Number of Faculty	504 (May 1, 2021)
Faculty Ratio Males to Females	80:20
Number of Foreign Faculty	29
URL	<a href="https://www.ryukoku.ac.jp/">https://www.ryukoku.ac.jp/</a>
Contact	Ryukoku Extension Center rec-k@ad.ryukoku.ac.jp

## Sustainability Report

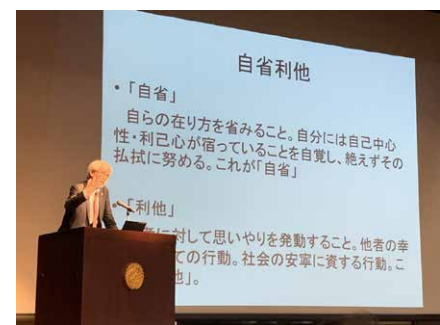
### Establishment of Yunus Social Business Research Center

#### ~ Aiming at the Development of Businesses Linking University and Community ~

Ryukoku University, whose founding spirit is based on the Jodo Shinshu sect of Buddhism, has established the Yunus Social Business Research Center to promote, research, and materialize the "Buddhist SDGs". The Factors which contribute to a sustainable society are considered from a Buddhist perspective, with "Introspective Altruism (自省利他 jisei-rita)" introduced

as the university's basic concept upon the occasion of its 380th anniversary in 2019.

We promote and support university-community collaborative research and social activities that lead to the implementation of social business in local communities, and focus on the development of projects that utilize the aspirations of the younger generation.



Established	1971
Number of Students	6,835 (May 1, 2021)
Student Ratio Males to Females	49:51
Percentage of International Students	8.7%
Number of Faculty	353 (May 26, 2021)
Faculty Ratio Males to Females	67:33
Number of Foreign Faculty	57
URL	<a href="https://www.soka.ac.jp/">https://www.soka.ac.jp/</a>
Contact	Planning and Public Relations Office / sokauniv-sdgs@soka.ac.jp

### Sustainability Report

#### Aiming to build a sustainable society based on Plankton Eco-engineering

Based on the university's unique research field of "Plankton Eco-engineering," and with the support of the Private University Research Branding Project and SATREPS, we are conducting research and development of environmental technologies appropriate for developing countries, the formation of a new industry through the commercialization of valuable products

derived from local phytoplankton, and environmental and economic education for local residents in Ethiopia. This project aims to build a sustainable, recycling-oriented society, and will contribute to environmental conservation and the elimination of hunger, as stated in the UN SDGs.



Established	1913
Number of Students	13,665 (March 31, 2021)
Student Ratio Males to Females	40:60
Percentage of International Students	10.6%
Number of Faculty	545 (March 31, 2021)
Faculty Ratio Males to Females	65:35
Number of Foreign Faculty	100
URL	<a href="https://www.sophia.ac.jp/jpn/aboutsophia/approach/SDGs/">https://www.sophia.ac.jp/jpn/aboutsophia/approach/SDGs/</a>
Contact	Sophia Sustainability Promotion Headquarters sustainability-co@sophia.ac.jp

Sustainability Report

## Responsible and SDGs-related Investments (Sustainable Finance)

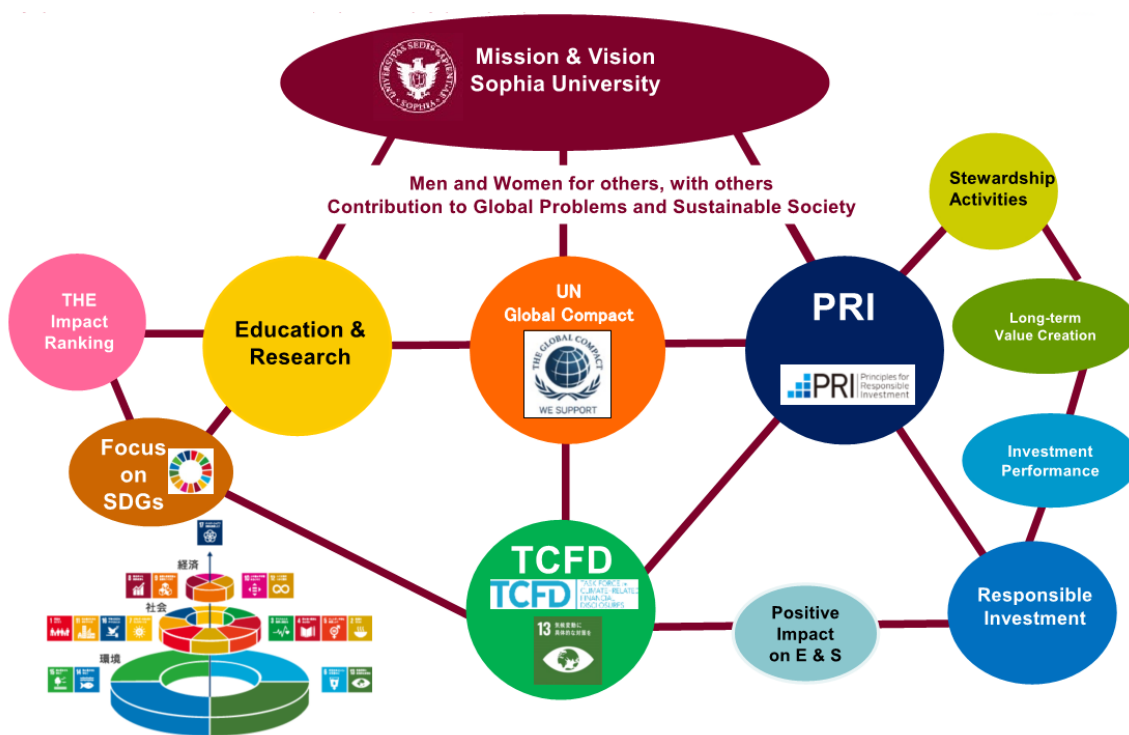
We incorporate ESG (environmental, social and governance) issues into our investment policy in pursuit of achieving both social returns (positive impacts to sustainability) and investment returns. Our approach of responsible and SDGs-related investment is built on the basis of aligning investment strategies to Sophia University's founding philosophy\* and we are committed

to contributing to the global sustainability issues as represented by SDGs.

\*Men and Women for Others, with Others. Contribution to solving global issues.

### ESG Investment Cases

<https://www.sophia-sc.jp/info/esg.html>

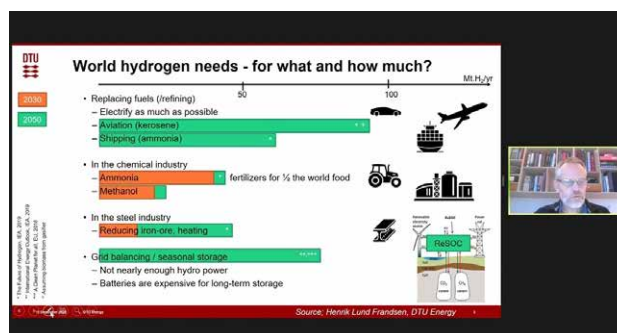


Established	1942
Number of Students	27,404 (May 1, 2020)
Student Ratio Males to Females	72:28
Percentage of International Students	3.8%
Number of Faculty	1607 (May 1, 2020)
Faculty Ratio Males to Females	79:21
Number of Foreign Faculty	55
URL	<a href="https://www.u-tokai.ac.jp/">https://www.u-tokai.ac.jp/</a>
Contact	Office for College of Global Citizen / knaka8@tokai.ac.jp
Sustainability Report	

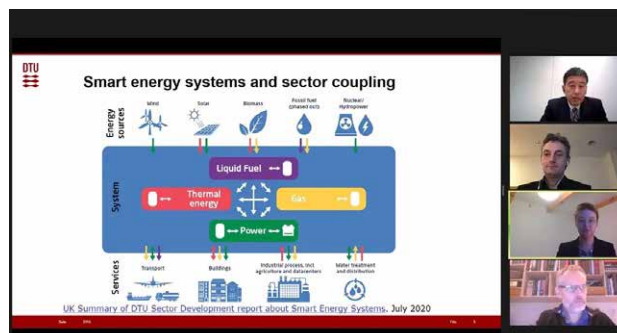
### Tokai University European Center "On-Line QOL Seminar"

In 2020, the QOL seminar will be held to commemorate the 50th anniversary of the Tokai University European Center. Tokai university has set QOL (Quality of Life) as one of keys SDGs. We have been holding seminars for experts from all over the world on topics for sustainable society such as DX (Digital Transformation), happiness,

decarbonized energy, elderly care, gender issues, and ecotourism. More than 900 people from all over the world participated in 2020. The QOL seminar will continue to focus on the theme of realizing a sustainable society.



The University QOL logo is officially permitted by the UN.



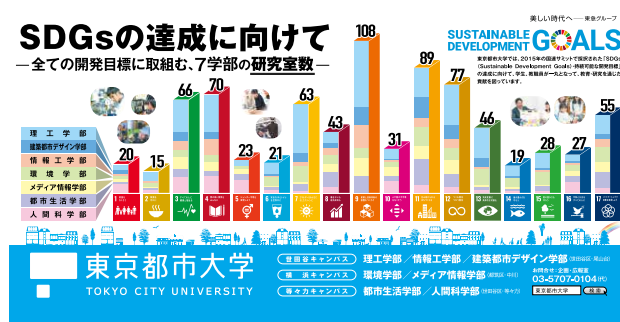
Established	1929
Number of Students	7,667 (May 1, 2021)
Student Ratio Males to Females	75:25
Percentage of International Students	2.5%
Number of Faculty	565 (May 1, 2021)
Faculty Ratio Males to Females	79:21
Number of Foreign Faculty	24
URL	<a href="https://www.tcu.ac.jp/">https://www.tcu.ac.jp/</a>
Contact	Technical Transfer Liaisons / sangaku@tcu.ac.jp

## Sustainability Report

### Tokyo City University : Toward the achievement of SDGs

Tokyo City University is engaged in education and research that contributes to the SDGs. The functions of the university are becoming more and more important, such as promoting carbon neutrality in collaboration with the local community and expanding this model in Japan and overseas. From this point of view, in 1998 our Yokohama campus was the first Japanese university to receive ISO14001 certification as an eco-campus in consideration of the natural environment. We are pioneers in creating a base of knowledge through learning about environmental issues during everyday life on campus.

In search of an affluent life, human beings have developed advanced technology. Our scientific understanding has also improved by leaps and bounds. However, we have also been forced to face energy problems and environmental problems, and to recognize that our resource and environmental capacity is not limitless. Our advanced information society has made our lives convenient, but has also brought about new problems. In order to build a truly prosperous society, we must take our various technological developments in a direction that can respond to the natural environment and that allows people to coexist in kindness.



Tokyo City University has a philosophy of "human resources development and academic research to bring about sustainable social development." We are working on all the sustainable development goals in all of our seven faculties.

- FACULTY OF SCIENCE AND ENGINEERING
- FACULTY OF ARCHITECTURE AND URBAN DESIGN
- FACULTY OF INFORMATION TECHNOLOGY
- FACULTY OF ENVIRONMENTAL STUDIES
- FACULTY OF INFORMATICS
- FACULTY OF URBAN LIFE STUDIES
- FACULTY OF HUMAN LIFE SCIENCES

Established	1881
Number of Students	10,448 (May 1, 2020)
Student Ratio Males to Females	84:16
Percentage of International Students	16.5%
Number of Faculty	1,529 (May 1, 2020)
Faculty Ratio Males to Females	-
Number of Foreign Faculty	176
URL	<a href="https://www.titech.ac.jp/">https://www.titech.ac.jp/</a>
Contact	<a href="mailto:sdg-up@jim.titech.ac.jp">sdg-up@jim.titech.ac.jp</a>
Sustainability Report	<a href="http://www.gsmc.titech.ac.jp/kankyohoukoku/2020/2020top.html?_gl=1*1rimf5r*_ga*MTI4ODQ4MzIxNS4xNjIzNjU0OTE0*_ga_VKBJ61GEPE*MTYyMzY1NDkxMy4xLjAuMTYyMzY1NDkxNS4w">http://www.gsmc.titech.ac.jp/kankyohoukoku/2020/2020top.html?_gl=1*1rimf5r*_ga*MTI4ODQ4MzIxNS4xNjIzNjU0OTE0*_ga_VKBJ61GEPE*MTYyMzY1NDkxMy4xLjAuMTYyMzY1NDkxNS4w</a>

**“Visualization” of linkage between research/education activities and SDGs: Dissemination of information through annual “Environmental Report”**

Since 2005, the university has prepared and published an annual Environmental Report. Based on the “Environmental Performance” in accordance with the Ministry of the Environment’s Environmental Reporting Guidelines, the report provides information on the university’s environmental conservation activities in relation to the SDGs, including efforts to reduce the environmental impact of waste and other materials generated by university activities, energy conservation and CO<sub>2</sub> measures and their status, and the efforts of students and faculty members to address environmental issues. We are contributing to society as a research and educational institution by addressing environmental issues through human resource development and research activities.

Contents



<b>President's Greeting</b>	
"Striving to Lead Society to a New Future" Kazuya Masu, President, Tokyo Institute of Technology	1
<b>Environmental Policy</b>	
Tokyo Institute of Technology Environmental Policy	2
<b>Scientific and Technological Research Contributing to the Environment</b>	
"Development of a Highly Selective Enzyme-Catalyzed Organic Synthesis Reaction" Matsuda Research Group doctoral student Afifa Ayu Koeseoma Associate Professor Tomoko Matsuda Department of Life Science and Technology, School of Life Science and Technology	3
"Geologic Storage of Carbon Dioxide" Professor Tetsuya Suekane Department of Mechanical Engineering, School of Engineering	5
<b>Environmental Education and Talent Development</b>	
Improving Environmental Education "Biochemistry II" Associate Professor Yoh-ichi Tagawa Department of Life Science and Technology, School of Life Science and Technology	7
"Environmental Impact Assessment" Associate Professor Shigeo Nishikizawa Department of Transdisciplinary Science and Engineering, School of Environment and Society	9
Environmental Education at the Tokyo Tech High School of Science and Technology	10
<b>Social Contribution Activities</b>	
Initiatives Related to Fukushima's Revitalization and Environmental Problems, and Activities on Science Education Support Kikura Laboratory Department of Mechanical Engineering, School of Engineering / Department of Transdisciplinary Science and Engineering, School of Environment and Society	11
Tokyo Tech VG Environmental Conservation Activities Tomoki Ichimura Fourth-year undergraduate student, Department of Architecture and Building Engineering, School of Environment and Society	13
<b>Environmental Management</b>	
Energy Conservation and CO <sub>2</sub> Reduction Initiatives	15
Initiatives to Reduce the Environmental Impact of General Waste	17
Initiatives to Reduce the Environmental Footprint of Chemical Substances	19
<b>Environmental Performance</b>	
Material Balance	21
FY2019 Environmental Performance Viewed from the Perspective of Laws and Ordinances Related to Energy Conservation	21



Established	1949
Number of Students	4,329 (May 1, 2020)
Student Ratio Males to Females	35:65
Percentage of International Students	15.4%
Number of Faculty	245 (May 1, 2020)
Faculty Ratio Males to Females	59:41
Number of Foreign Faculty	41
URL	(Japanese) <a href="http://www.tufs.ac.jp/">http://www.tufs.ac.jp/</a> (English) <a href="http://www.tufs.ac.jp/english/">http://www.tufs.ac.jp/english/</a>
Contact	Research Promotion Division / <a href="mailto:kenkyu-soumu@tufs.ac.jp">kenkyu-soumu@tufs.ac.jp</a>
Sustainability Report	<a href="http://www.tufs.ac.jp/documents/abouttufs/pr/pr-brochures/TUFS_ir2020_1104_1p.pdf">http://www.tufs.ac.jp/documents/abouttufs/pr/pr-brochures/TUFS_ir2020_1104_1p.pdf</a>

## Promoting multicultural education through inter-university collaborations

We offer a variety of courses to study and deepen our understanding of multicultural coexistence in support of SDG 4, 5, 10, 16. Our mission is to nurture individuals who can respond to and contribute to the resolution of issues that arise in multilingual and multicultural societies

and communities. In 2020, we launched the “Consortium for Intercultural Education” and started building an inter-university platform to promote and support education on intercultural issues.





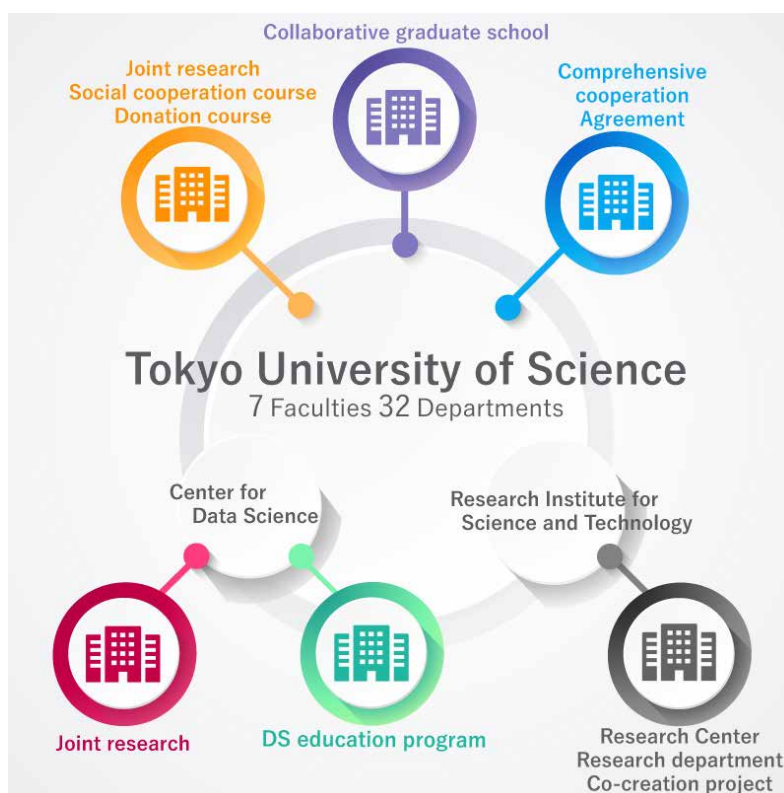
# Tokyo University of Science

Established	1881
Number of Students	19,033 (May 1, 2021)
Student Ratio Males to Females	80:20
Percentage of International Students	3.8%
Number of Faculty	766
Faculty Ratio Males to Females	80:20
Number of Foreign Faculty	42
URL	<a href="https://www.tus.ac.jp/">https://www.tus.ac.jp/</a>
Contact	<a href="mailto:koho@admin.tus.ac.jp">koho@admin.tus.ac.jp</a>
Sustainability Report	<a href="https://www.tus.ac.jp/sdgs/">https://www.tus.ac.jp/sdgs/</a>

## TUS Science and Technology Innovation Hub for SDGs

In 2019, the Tokyo University of Science (TUS) established the Data Science Center to promote mathematics and data science-focused education and research. The Data Science Center, in combination with the Research Institute for Science and Technology, which promotes interdisciplinary, collaborative research, seeks to be

a hub for collaboration, not only within TUS but with other universities, companies and research institutions throughout Japan and overseas as well, in order to develop creative innovations that address the challenges our world faces and, thereby, help society in becoming more sustainable and resilient.



Established	1887
Number of Students	30,465 (March 31, 2020)
Student Ratio Males to Females	57:43
Percentage of International Students	6.1%
Number of Faculty	1,258 (FY2019)
Faculty Ratio Males to Females	71:29
Number of Foreign Faculty	124
URL	<a href="https://www.toyo.ac.jp/">https://www.toyo.ac.jp/</a>
Contact	President's Office / <a href="mailto:ml-sdgs@toyo.jp">ml-sdgs@toyo.jp</a>
Sustainability Report	<a href="https://www.toyo.ac.jp/sdgs/">https://www.toyo.ac.jp/sdgs/</a>

### **Providing social education activities of impart Toyo University's knowledge to the society.**

Toyo University has a history of providing educational opportunities for those "with no surplus of money and time" since its foundation in 1887.

Inheriting the spirit of its founder Enryo Inoue, who made grand nationwide lecture tours, Toyo University provides the general public with a wide range of opportunities for

learning, aiming to widely disseminate social education and lifelong learning.

Succeeding the heritage, Toyo University will contribute to the creation of a brighter future in the global society and strive to achieve SDGs.



Established	1946
Number of Students	6,789 (May 1, 2021)
Student Ratio Males to Females	49:51
Percentage of International Students	4.4%
Number of Faculty	262 (May 1, 2021)
Faculty Ratio Males to Females	80:20
Number of Foreign Faculty	31
URL	<a href="https://www.kitakyu-u.ac.jp/">https://www.kitakyu-u.ac.jp/</a>
Contact	Regional Alliances Department / <a href="mailto:chiiki@kitakyu-u.ac.jp">chiiki@kitakyu-u.ac.jp</a>

Sustainability Report

**An interdisciplinary approach to human resource development that supports "Environmental sustainability"**

The University of Kitakyushu (UKK) is engaged in the development of environment-focused human resources under its "Environmental sustainability" goal, one of three goals\* formulated by the university in 2016. Within its design for university-wide fundamental education UKK offers a focus on environmental studies through its ESD programme, available as a minor in the arts-focused faculties on the Kitagata Campus, and through a specialized curriculum in the science-focused faculty found on the Hibikino Campus. Solutions to environmental problems require an interdisciplinary

approach, and for this reason it is essential for students to acquire knowledge and skills from various fields, as well as develop networks with people in different professions and with different specialties. With this in mind, we have created a subject, available to students on both campuses, that is titled "Environmental Technology for the Future". The creation and offering of this subject represents an active attempt to provide an arena for educational opportunities made possible by a fusion of the arts and the sciences.

The University of Kitakyushu aims to build a sustainable society capable of solving environmental problems and will work on SDGs education with a view to creating human resources who have the capacity for original and critical thought required to find solutions to environmental problems.

\* The other two goals are "Regional engagement" and "Global connections".

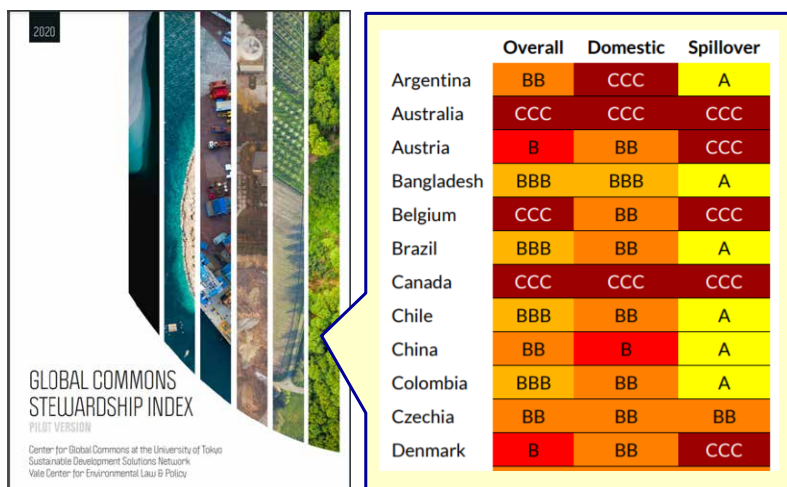


Established	1877
Number of Students	27,922 (May 1, 2020)
Student Ratio Males to Females	76:24
Percentage of International Students	14.2%
Number of Faculty	3,924 (May 1, 2021)
Faculty Ratio Males to Females	86:14
Number of Foreign Faculty	634
URL	<a href="https://www.u-tokyo.ac.jp/en/index.html">https://www.u-tokyo.ac.jp/en/index.html</a>
Contact	<a href="mailto:intl-strategy.adm@gs.mail.u-tokyo.ac.jp">intl-strategy.adm@gs.mail.u-tokyo.ac.jp</a>
Sustainability Report	<a href="https://www.u-tokyo.ac.jp/en/about/vision-action.html">https://www.u-tokyo.ac.jp/en/about/vision-action.html</a> <a href="http://www.tscp.u-tokyo.ac.jp/en/index.html">http://www.tscp.u-tokyo.ac.jp/en/index.html</a>

The UTokyo Future Society Initiative (FSI) promotes multi-stakeholder collaborations for the future of humanity and the planet. Encouraging variety of activities related to the SDGs carried out by the faculty, staff and students of UTokyo is one of its core initiatives. FSI now has 270 activities listed as FSI Projects (as of May 2021), aiming to promote synergies between research, education and societal activities that contribute to achieving 17 goals

of the SDGs. In December 2020, UTokyo created and released a prototype version of the Global Commons Stewardship Index (GCSI) in collaboration with overseas companies and international organizations. This Index is expected to drive the global effort to encourage countries to transform their socio-economic systems to realize a sustainable future for humanity.

## Global Commons Stewardship Index (GCSI) Pilot Version



SDSN, Yale Center for Environmental Law & Policy, and Center for Global Commons at the University of Tokyo. 2020. *Pilot Global Commons Stewardship Index*. Paris; New Haven, CT; and Tokyo.

Established	1973
Number of Students	16,542 (May 1, 2021)
Student Ratio Males to Females	63:37
Percentage of International Students	13.2%
Number of Faculty	1,887 (May 1, 2020)
Faculty Ratio Males to Females	81:19
Number of Foreign Faculty	142
URL	<a href="https://www.tsukuba.ac.jp/">https://www.tsukuba.ac.jp/</a> <a href="https://www.osi.tsukuba.ac.jp/sdgs/">https://www.osi.tsukuba.ac.jp/sdgs/</a>
Contact	<a href="mailto:sdgswsb@un.tsukuba.ac.jp">sdgswsb@un.tsukuba.ac.jp</a>
Sustainability Report	<a href="https://www.tsukuba.ac.jp/about/disclosure-report/">https://www.tsukuba.ac.jp/about/disclosure-report/</a>

## Tsukuba Conference 2019

Tsukuba Conference 2019 was held from October 2nd to 4th at Tsukuba Congress Center, located in the Tsukuba Science City, based on the main theme of the conference, "How do science, technology and innovation contribute to achieving Society 5.0 and SDGs?" The purpose of the Tsukuba Conference was to bring together future shapers beyond all borders to facilitate discussion among them. It provided them with the opportunity to express their vision of the future and to meet their collaborators. The University of Tsukuba participated in the conference as one of the member institutions and contributed to its success.

During the three-day event, 1,500 participants from 65 countries and regions attended over 50 sessions, where young talents from around the world actively exchanged opinions on various issues related to society and science. At the opening ceremony on October 2nd, NAGATA Kyosuke, President of the University of Tsukuba gave a welcome address as the chair of the Tsukuba Conference Organizing Committee. President Nagata called for the achievement of Society 5.0 and SDGs with TRUST as the keyword. MEXT Minister HAGIUDA Koichi attended the ceremony and said he anticipates today's discussions and exchanges will help lead the participants to become leaders in their fields both domestically and overseas

and help contribute to the development of humanity and society.

On October 3rd, two main sessions were held based on the main theme of the conference, Society 5.0 and SDGs. Dr. SANKAI Yoshiyuki, CEO of CYBERDYNE Inc and professor of the University of Tsukuba had a presentation and panel discussion with other speakers in one of the main sessions, "Entrepreneurship and Innovation for Shaping the Next Society."

At the closing ceremony on October 4th, Tsukuba Declaration was read out by young participants. It emphasized importance of young generations' roll to solve global challenges.







**UNITED NATIONS  
UNIVERSITY**

**UNU-IAS**

UNU SDG–Universities Platform (SDG-UP)

SDGs-UP@unu.edu